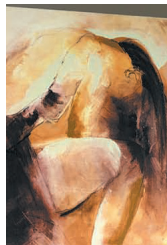




# FIREPLACE **CORNER**



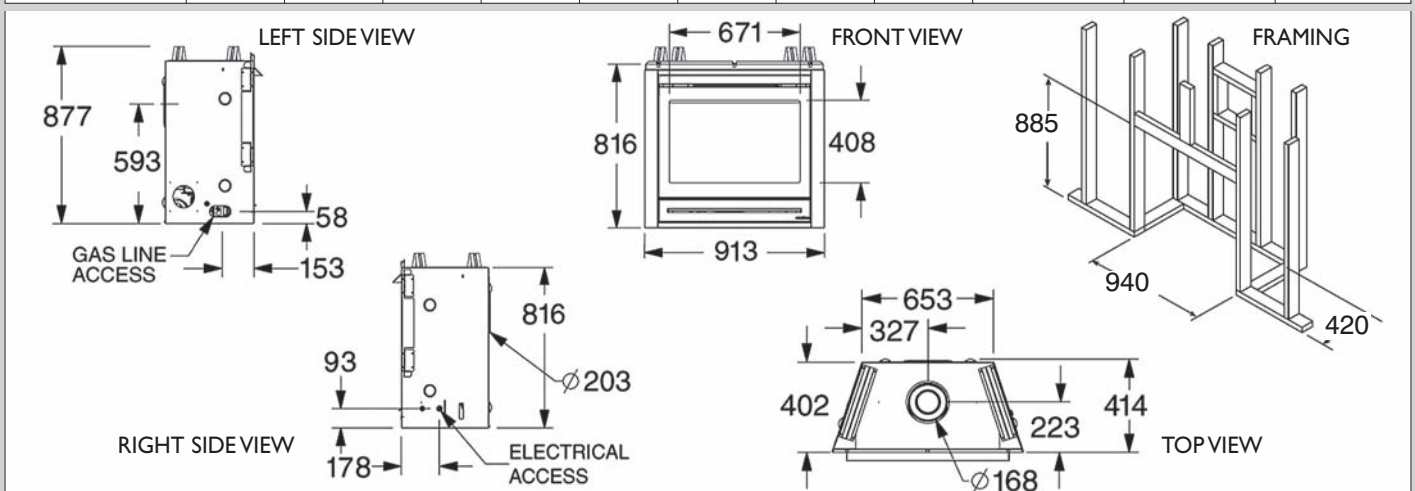
**HEAT & GLO™**  
No one builds a better fire



**SL-550**  
Balanced Flue Log Fire

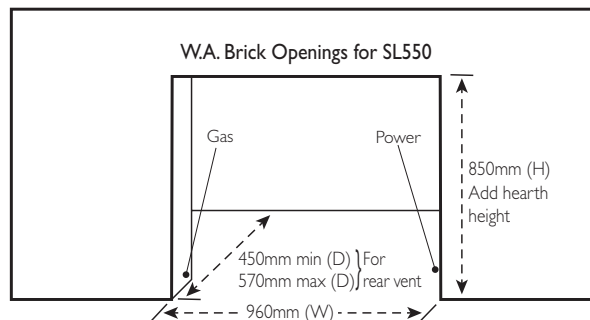
# SL-550TRSI-AU Specifications

MODEL	HEIGHT		FRONT WIDTH		BACK WIDTH		DEPTH		VIEWING AREA	mjh INPUT	kWh OUTPUT
	Actual	Framing	Actual	Framing	Actual	Framing	Actual	Framing			
550TRSI-AU	828	885	913	940	653	940	414	420	670 x 410	NG 28 LPG 26	NG 5.9 LPG 5.5



Dimensions above are in millimetres and for reference only. We recommend measuring individual units at installation.

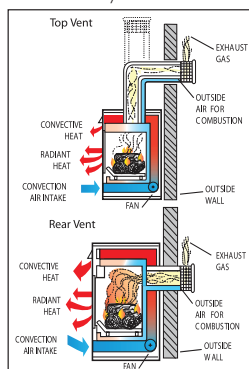
Refer to installation manual for detailed specifications on installing this product. Heat & Glo reserves the right to update units periodically. The flame and ember appearance may vary based on the type of fuel burned and the venting configuration used. Photos in this brochure may vary in colour and dimension (size) from the actual product.



NOTE: Crimped/capped-off copper gas line to be provided close to the bottom left hand side within the opening. Single non-switch GPO/413 socket to be provided close to bottom right hand side within opening.

## SL-550 features

- Top or rear venting options provide installation flexibility
- Zero Clearance provides ease of installation and cost savings
- IntelliFire Plus Ignition System
- Realistic ceramic fiber campfire style logs
- Pebble burner available
- Shallow 415mm depth makes it ideal for small spaces
- Balanced flue technology provides a sealed combustion chamber, maintaining indoor air quality
- Energy saving 78% efficiency with the authenticity of a traditional fire
- Standard dress guard with mesh provides clean lines and safety
- Three speed fan with auto on/off
- Variable valve allows you to adjust the flame height and heat output
- Multi-function remote provides temperature, flame height, thermostat and timer mode, offering true convenience - never again bend down to start your fireplace
- 170mm top or rear venting/205mm rear venting
- AGA #5668



## Balanced Flue Gas Fireplace

A completely sealed system, Heat & Glo balanced flue gas fireplaces draw 100% of combustion air from the outdoors and exhaust all combustion byproducts back outside, with no affect on indoor air quality. In addition, cold air drafts are eliminated and heat output is maximised. No electricity, power venting or fan are required to operate, eliminating the need for a conventional chimney, and allowing for installation in nearly any room of the home. TR technology, another Heat & Glo invention, allows for venting off the top or rear; providing even greater placement flexibility.

## INTELLIFIRE PLUS IGNITION SYSTEM AND WIRELESS CONTROLS

The IntelliFire Plus Ignition System is an "intelligent" control system providing energy conservation and the comfort of a roaring fire, all at your fingertips!

IntelliFire Plus features intermittent pilot ignition (IPI) allowing you to conserve fuel and money when the fireplace is not in use. In addition, the system offers seamless transition from AC to battery backup in a power outage, as well as built-in safety features and memory settings. Lastly, our new IntelliFire Plus remote control provides stylish and fully features benefits that make controlling your heat easier than ever.

### INTELLIFIRE PLUS RC300

Incorporates an LCD screen, intuitive menus and large control buttons in a sleek and modern design. This wireless control gives you the flexibility to use as a remote only or mount on the wall anywhere in the room.

### MODEL: RC300-HNG

Features: Auto Battery Backup, Pilot Activation, ON/Off, Flame Height, Fan Speed, Room Temperature Readout, Thermostat Mode, Wall Docking Station.



Showroom Mon-Fri 9am-5pm, Sat 9am-1pm  
277 Lord Street, Perth | 08 9228 2600  
sales@fireplacecorner.com.au  
www.fireplacecorner.com.au

**FIREPLACE  
CORNER**

**HEAT & GLO**  
No one builds a better fire

Disclaimer: All products are subject to availability and may be changed without notice.