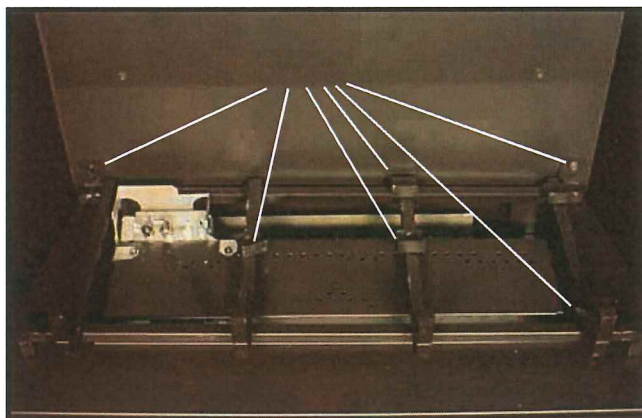
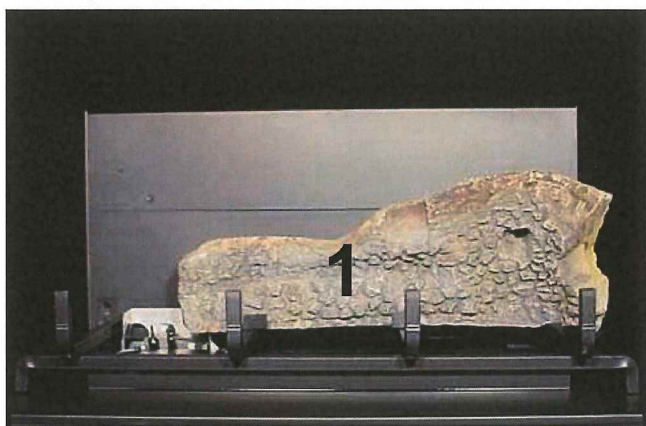


## E. Log Placement Instructions

Log Assembly: LOGS-550TRSAUD ←



**CAUTION:** Logs are fragile! Carefully remove the logs from the packaging.



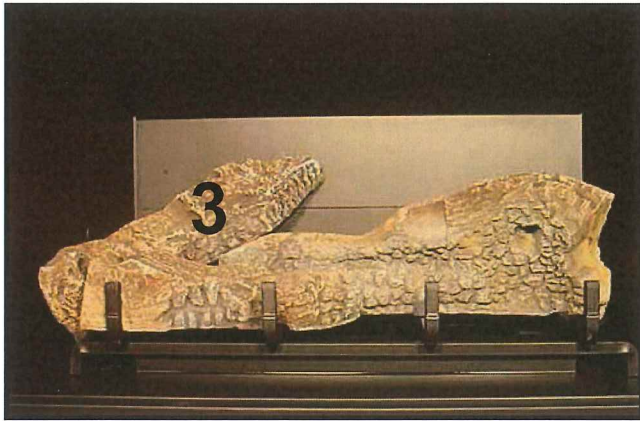
**LOG #1 (SRV550-715):** Place log #1 onto the log grate so that the notches in the bottom of the log fit on the right three grate bars. Push log #1 towards the rear locating tabs.



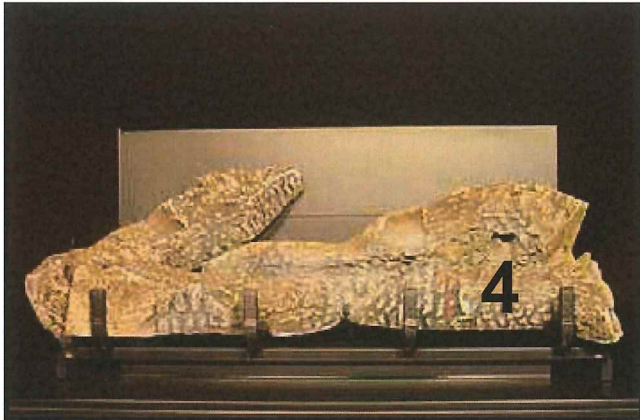
**LOG #2 (SRV347-703):** Place log #2 so that its left edge sits against the left front grate corner and its right edge rests against the tab on the second grate bar.



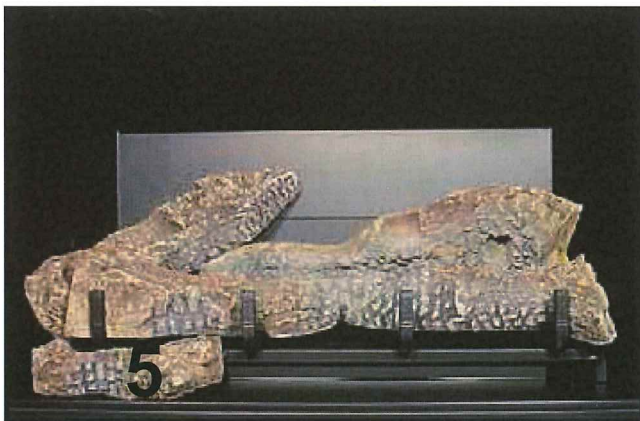
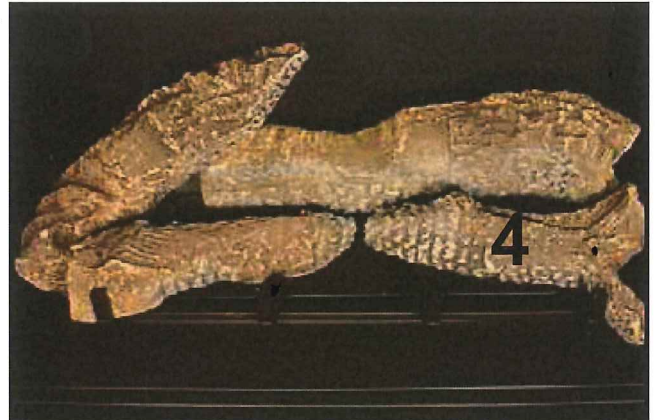




**LOG #3 (SRV349-704):** Position log #3 so that its right edge sits on log #1 as shown and its left edge sits on the first grate bar behind log #2.



**LOG #4 (SRV278-705):** Position log #4 between log #1 and the locating tab on the fourth grate bar. Push its left hand side back to the locating tab as the grate bar.



**LOG #5 (SRV540-704):** Put the forked end of log #5 on the base in front of the grate, towards the center of the second bar grate.



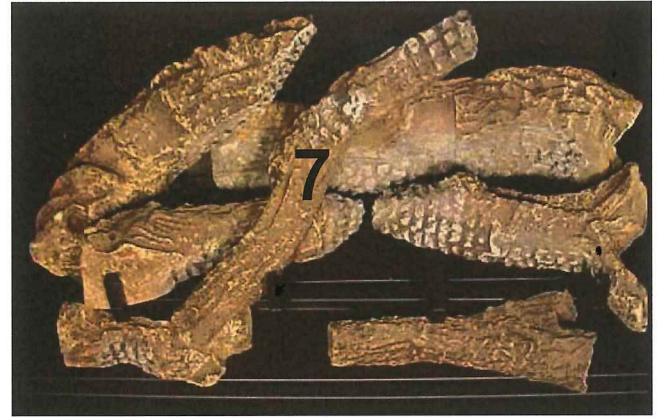




**LOG #6 (SRV550-718):** Place log #6 on the base on front of the grate as shown.



**LOG #7 (SRV484-703):** Place log #7 on the groove in log #2 with its rear top on log #1 and front top resting on log #5.



**LOG #8 (SRV347-701):** Hook log #8 on the right hand corner grate bar and rest its rear on log #1 as shown.

