

G. Positioning the Logs

While still breakable, the logs do not become fragile until after the gas stove is burned and they have cured. After curing, any handling must be done with care as breakage can easily occur.

PLEASE NOTE: Logs have been designed to work specifically with the burner of this gas stove. Exact placement will ensure proper operation of your gas stove.

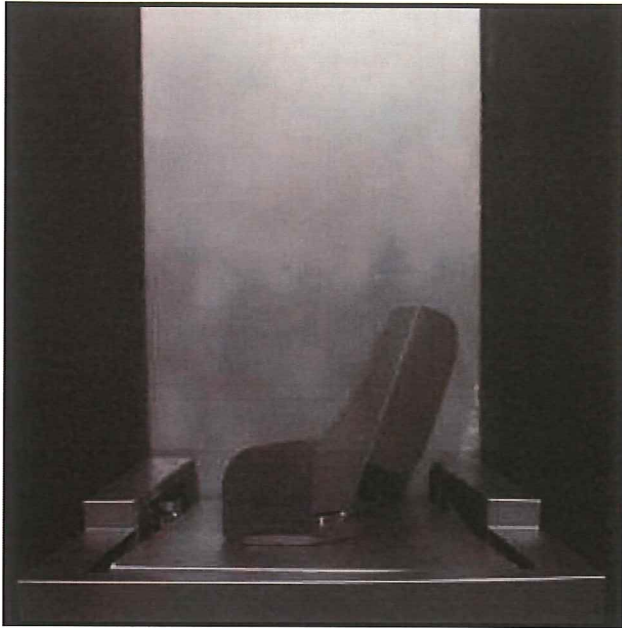


Figure 7.13

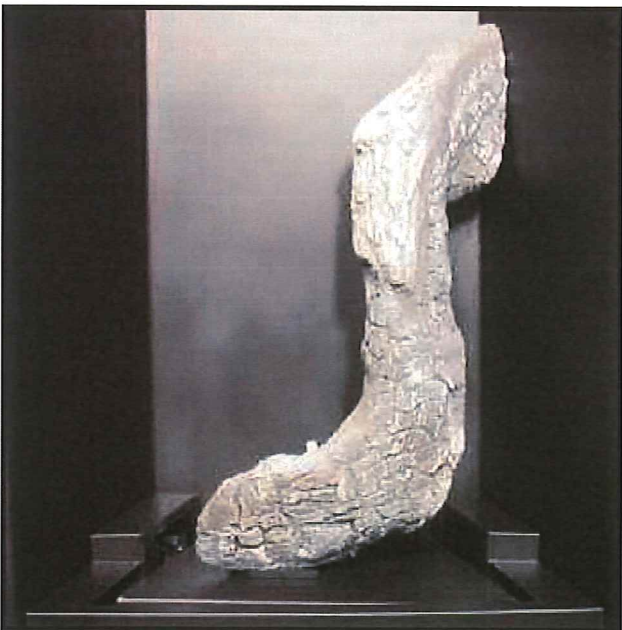


Figure 7.14

Place log #1 into the cradle in the burner. Lean the log back towards right corner of firebox.

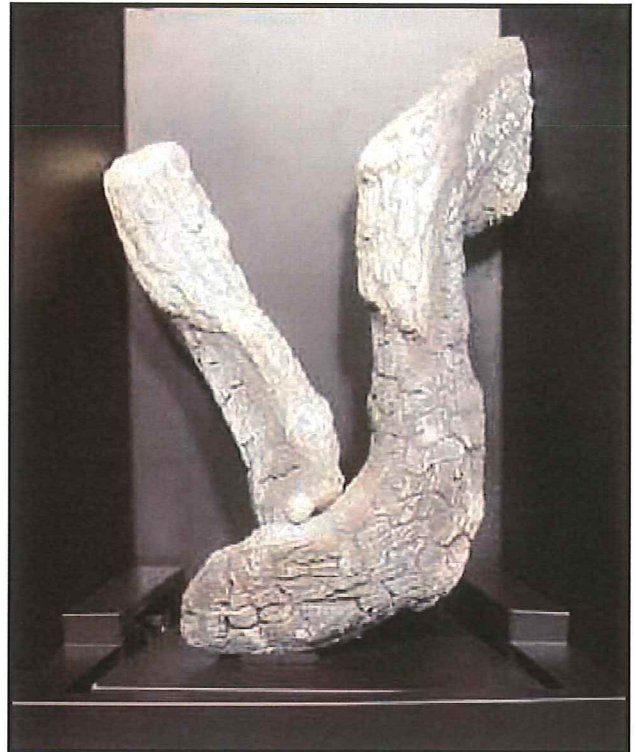


Figure 7.15

Locate log #2 over the pin in log #1 and into notch in log #1. Lean the log back toward the left corner of the firebox.

H. Placing Mineral Wool

⚠ WARNING



Explosion Risk.

- Follow ember placement instructions in manual.
- Do NOT place embers directly over burner ports.
- Replace ember material annually.

Improperly placed embers interferes with proper burner operation.

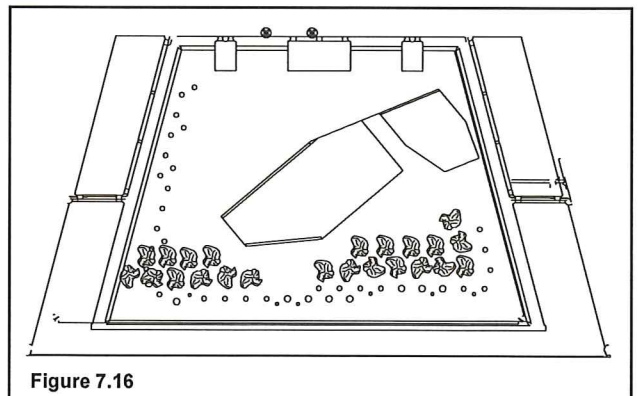


Figure 7.16

Apply 15 mm size pieces sparingly along ports as shown. Do not block ports.