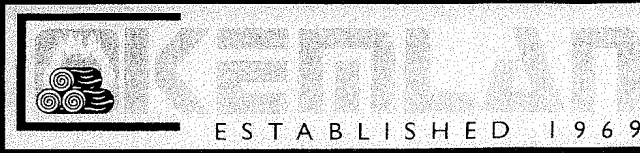


# CONVECTAIRE

EFFICIENT • ELEGANT • EASY TO MAINTAIN



*A Convectaire will become the focal point of any home. A unique fireplace that is more efficient than a conventional brick chimney due to the design of the heat exchange system.*



# CONVECTAIRE

When building or renovating, a Convectaire is an impressive feature to add to any home. Available as a single or double sided model, the fire can be viewed from one or two rooms.

The strong, ceramic glass bi-fold are an added feature that allows you total flexibility. Leave the doors open to enjoy the true romance of an open fire or closed so the fire can be left unattended. Either way, the unique heat exchange system will give you steady, natural heat.

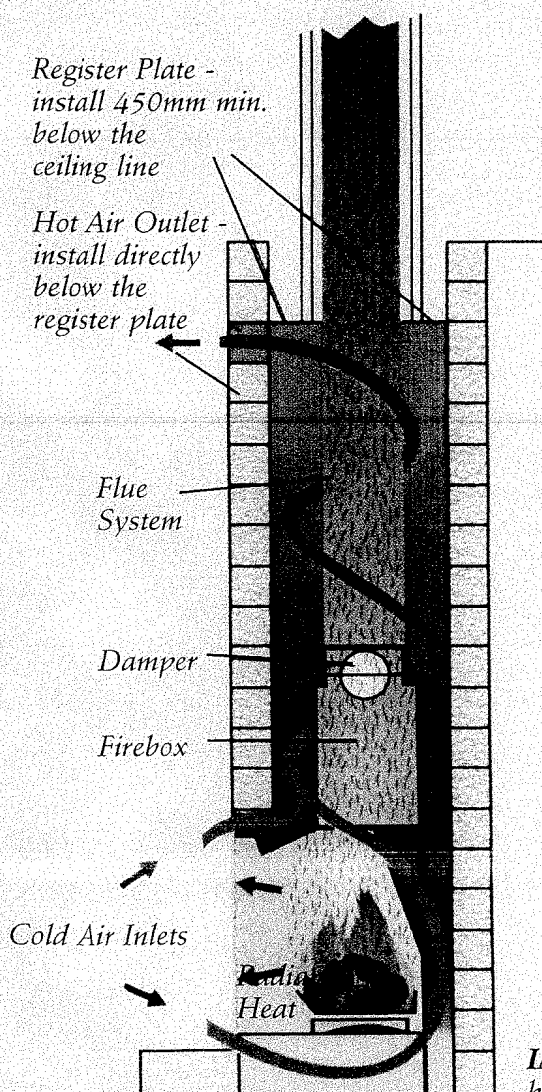
The Kemlan system is cost effective to install as it only requires simple brickwork. And best of all . . . a 10-year

warranty, backed by an Australian Company with a proven track record for excellence.

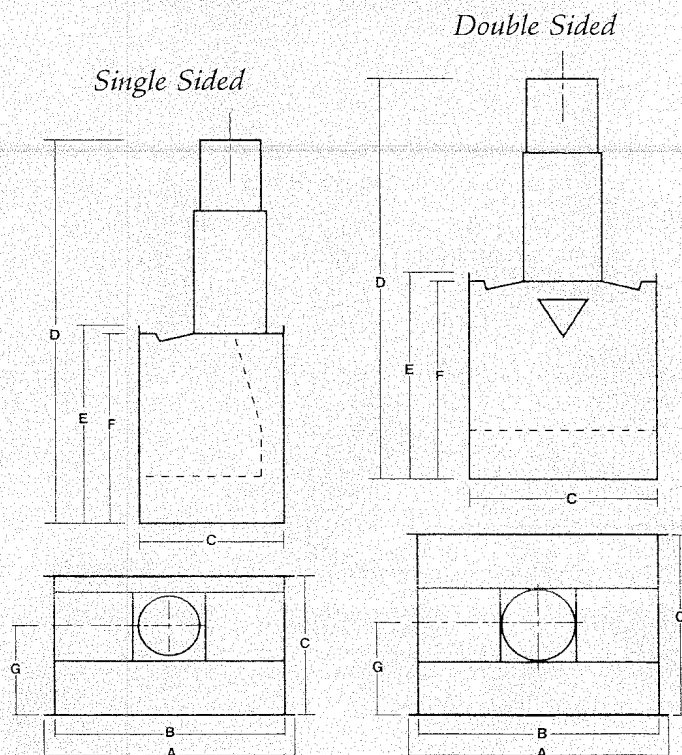
The Convectaire includes:

- A firebox complete with a built-in gather, log retainer, ceramic glass bi-fold doors, hot air outlet, [REDACTED] and damper control (a full heat exchange system).
- [REDACTED]
- Your choice of fascia trim. These include brass, stainless or painted (to match the unit).

|   | Dimensions              | Single sided | Double sided |
|---|-------------------------|--------------|--------------|
| A | Fascia width            | 1010 mm      | 1010 mm      |
| B | Unit width              | 965 mm       | 965 mm       |
| C | Unit depth              | 595 mm       | 730 mm       |
| D | Unit height             | 1510 mm      | 1630 mm      |
| E | Fascia height           | 865 mm       | 865 mm       |
| F | Top rail height         | 840 mm       | 840 mm       |
| G | Flue (centre) to fascia | 365 mm       | 365 mm       |
|   | Flue diameter           | 240 mm       | 280 mm       |
|   | Weight (Firebox only)   | 200 kg       | 240 kg       |



Unit is designed to sit directly on the concrete slab.



**IMPORTANT:** The Convectaire must be fully enclosed by masonry, brickwork or autoclaved aerated concrete (Hebel or equivalent). Check with your local Kemlan retailer.

Your local Kemlan Agent is

**KENLAN**  
ESTABLISHED 1969



# KEMLAN

Since 1969

## **SPECIALISTS IN FIREPLACE DESIGN & MANUFACTURE**

To further assist in control, the hot air outlet is positioned immediately above the firebox opening. With this in the fully closed position all the heated air is directed to the ducting, when opened, approximately half the heated air enters the room in which the fireplace is situated, enabling rapid warmup of the room.

The ducted system works as well with the doors open or shut. With the doors open of course more heat is given off directly by the fireplace but this is offset by the fact that the fire will burn more fiercely and maintain the heat output through the ducting. More firewood will of course be used.

### **PERFORMANCE**

At a supervised test the KEMLAN "CONVECTAIRE" STAGE TWO MODEL with the glass doors and fan forcing raised the temperature in an uninsulated room by 18°C, in 1 ½ hours from first lighting the fire. The room was 20ft. x 22ft. x 8ft. and poorly sealed. During the latter part of the test the temperature was rising one degree centigrade over four minutes, and no additional firewood was added.

Reports from homeowners show the remarkable efficiency of the "CONVECTAIRE" with the doors open or shut. Using good quality hardwood logs from two to four hours burning can be expected with the doors wide open. With the doors shut and the damper and air inlet controls properly regulated reports vary from five to over nine hours burn from a single loading of wood.

Under test, the unit has produced well over 100,000 B.T.U.s, and reports indicate an ability to comfortably warm homes over 200 square metres even in colder areas.

## **THE KEMLAN "CONVECTAIRE" BUILT-IN FIREPLACE** **Patent Application No. P.F. 25384/84**

Designed primarily as a builders aid, the "Convectaire" is normally built into the house with brickwork. Great care has been taken by KEMLAN to ensure that the unit will suit standard gauge brickwork in all directions. (See Illustration 1.) The finished unit has all the permanence and traditional appeal of an old fashioned fireplace, without its usual problems.

It will not smoke.  
It is up to five times more efficient and will warm large areas.  
It is simple to install.  
It does not require special foundations.  
It is much more economical on firewood.

### **The "CONVECTAIRE" is flexible. It can be:-**

- Installed in any home, new or old, brick or timber, upstairs or downstairs.
- Installed downstairs in a two storey house. Using the 45° wall penetration kit, the flues can be taken up the outside of the house avoiding upstairs rooms.
- Placed outside the house in the garden or on a patio. A hole large enough to fit the front of the unit can be cut into the wall, and the unit fitted to the opening and enclosed to suit the exterior of the house. A special extended front unit is available to suit cavity brick walls. This method is a great space saver.
- Obtained as a double sided unit for installing between two rooms giving the impression of two fireplaces, one in each room. When this method is used it is recommended that doors be fitted to both sides to avoid cross draughts causing smoking.

**YOU CAN HAVE WHAT YOU WANT, WHERE YOU WANT IT,  
AT A PRICE YOU CAN AFFORD.**

### **THE KEMLAN "CONVECTAIRE" STAGE ONE (NON-DUCTED MODEL).**

**NOTE:** This unit must be entirely surrounded by brickwork.

The Stage One comprises of a heavy, fully welded steel firebox complete with gather, damper and flue outlet. Fire bricks and mortar are supplied for the floor of the firebox. Air vents are built into the unit above and below the opening to ensure good convection.

Unique to KEMLAN and an integral part of the award winning design of the "Convectaire" Stage One, is the sealing plate provided. Fitted into the brickwork surround 300mm (12") below the ceiling, this cap effectively provides a roof for the brick cavity and ensures that **all** the heat (up to 80,000 B.T.U.) given off by the walls, gather, and the flues is trapped in the brick cavity. This heat is allowed back into the house via the vent supplied, which should be fitted just below the sealing plate (see illustration 1). This design feature is responsible for the great improvement in efficiency over similar units which collect only the heat given off by the firebox.

Flue kits to five metres above the floor can be ordered to suit an all metal chimney or a full brick one. The standard log retainer may be replaced by a heavy duty grate and ashpan for a small extra charge, however, best results are obtained by burning the fire direct on the fire-brick lined floor.

The efficiency, safety and cleanliness of the Stage One is greatly improved by the addition of these doors. Controlled combustion is achieved resulting in an enormous saving in firewood. The ashes need only to be removed occasionally instead of daily. Also, with the doors shut no sparks can escape into the room and the fireplace can be left unattended safely for hours.

Though the concept of the "Convectaire" is as modern as tomorrow, tried and proven age old principles were used in its design. Not just a rectangular box, the unit has a sloped heat reflecting rear wall reinforced with anti-distortion bars and heat sinks.

The scientifically designed throat (venturi), smoke shelf and gather ensure efficient smoke-free operation. A damper is fitted but its main operation is in conjunction with the doors. Careful use can provide extra heat, but exceptional use will cause smoking if the doors are not fitted, or are left open.

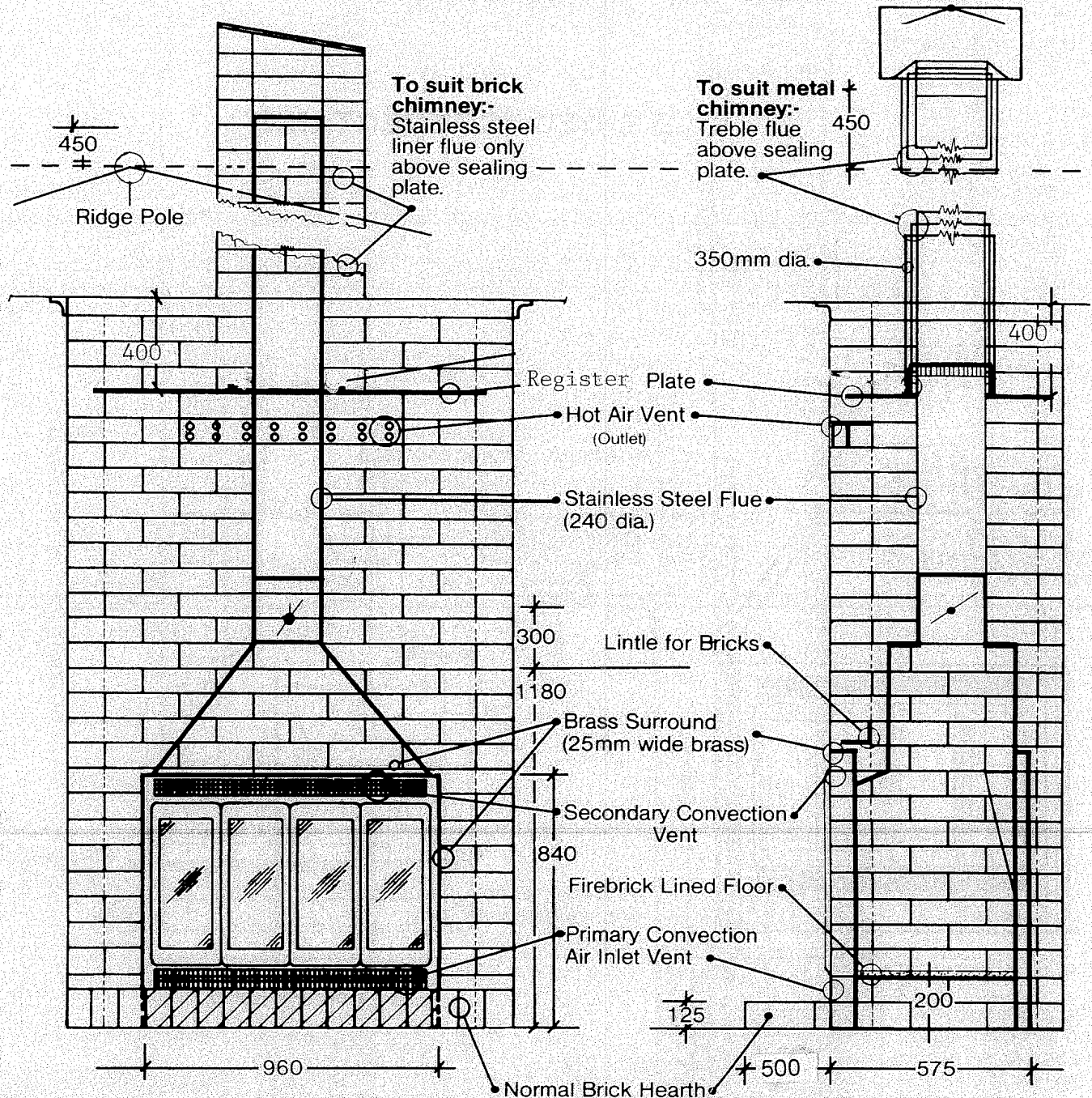
The great success of the design is living proof that the old timers knew what they were about when they built fireplaces. Having followed their lead, KEMLAN decided to go all the way and make it last. Over 200 kilos of steel is used in its construction and over one hundred units were tested in local home conditions before they were released for general distribution.

The "Pyroceram" glass doors follow the same pattern. Tempered glass was not considered good enough and therefore 5mm thick "Pyroceram" transparent ceramic glass with a normal service rating of 1202°F. (650°C.) was used. Set in 3mm thick steel frames, the doors provide an excellent view of the fire and makes it impossible for sparks, ash or smoke to escape.

When installing either the Stage One units it is important that sufficient clearance be left all around the unit to allow for expansion. Also a gap of 5mm to 10mm must be left around the opening to prevent expansion cracking the brickwork. This gap will be covered by the fitted brass flange.

When doors are to be fitted either at the time of installation or later, the front of the fireplace must be flush with the surrounding wall to allow the doors to fold right back.

# “CONVECTAIRE” STAGE ONE

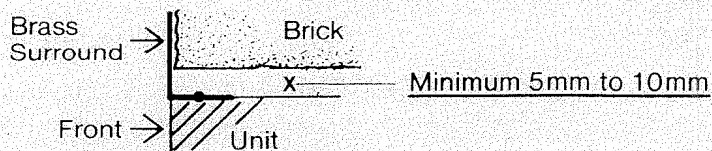


**NOTE:** When unit is placed directly on slab a normal hearth of one brick on edge will fit under primary air vent. Floor of firebox will then be 200mm above floorline.

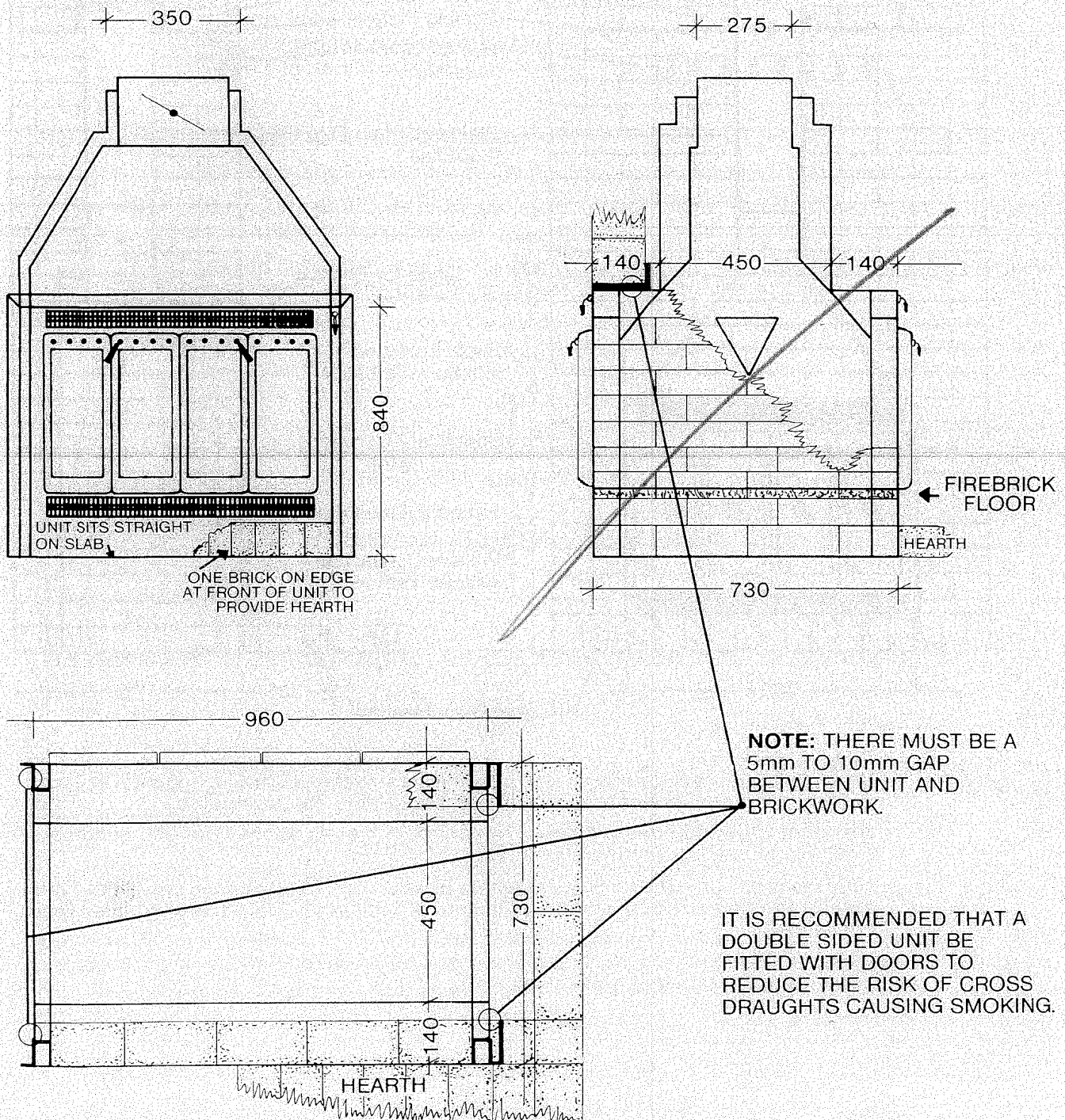
Standard Unit and flues will reach to approx. 5 metres above floor 45° bends are available to help avoid rafters or trusses.

Holes may be left in the brickwork instead of using the hot air outlet if preferred. Total area of the holes should equal a minimum of 225cm sq. (35 sq. ins.) to allow free convection.

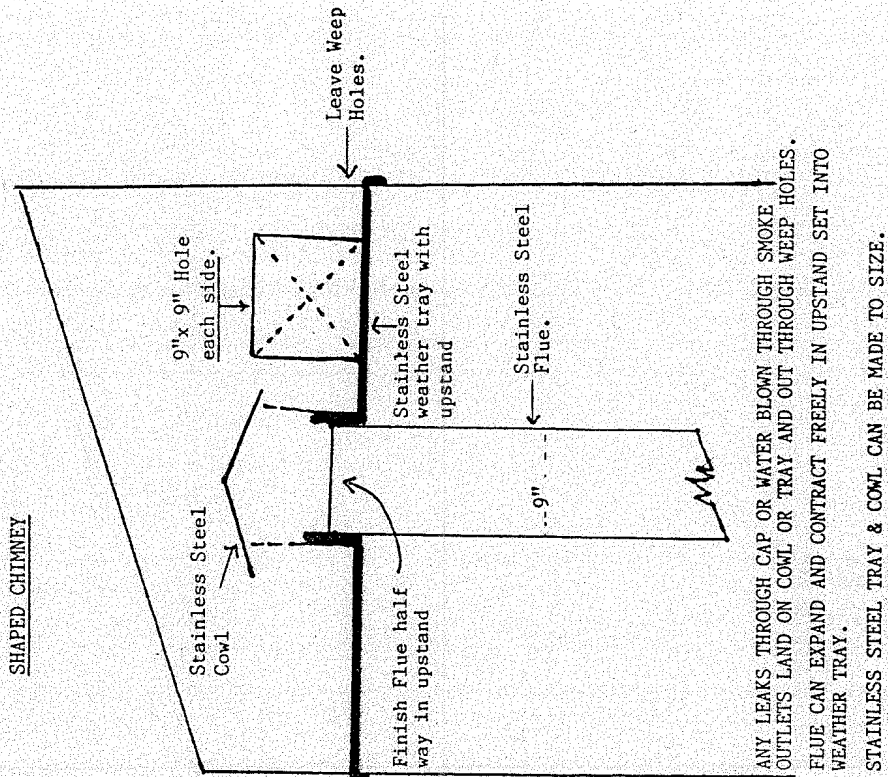
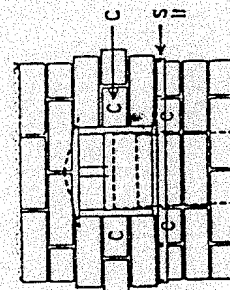
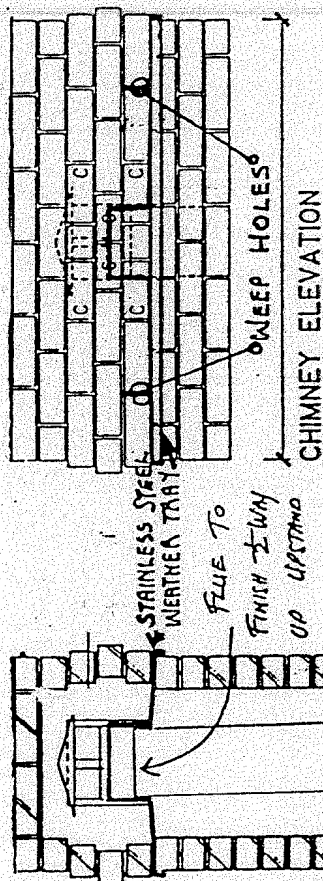
It is essential that a minimum gap of 5mm be left between the unit and brickwork to allow for expansion and prevent cracking.

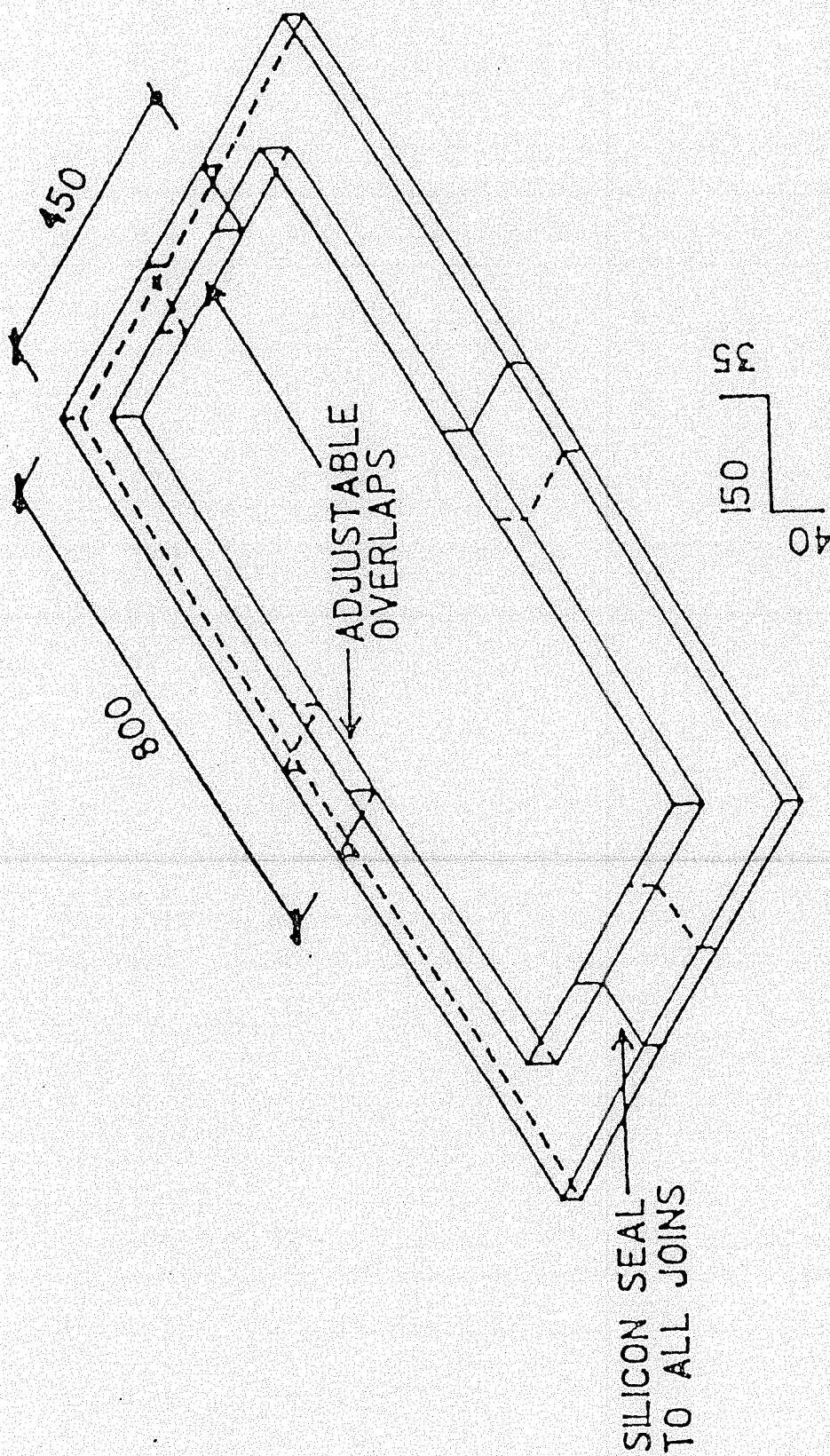


**DOUBLE SIDED "CONVECTAIRE"**

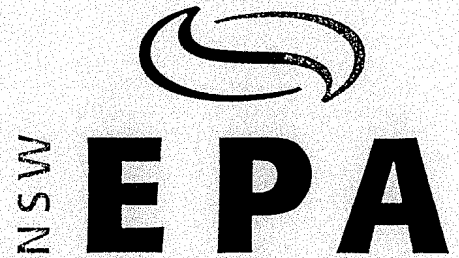


KEYLON WEATHER TRAY AND FLASHING AS RECOMMENDED FOR ANY INSERT WITH A BRICK CHIMNEY. THIS METHOD ENSURES NO LEAKING PROBLEMS.





STAINLESS STEEL  
4 PIECE FLASHING



P O Box A290 Sydney Sth  
NSW 1232


# **Certificate of Exemption for Domestic Solid Fuel Heaters**

**(Clean Air (Domestic Solid Fuel Heaters) Regulation 1997, Clause 16)**

**Certificate Number E 014**

This is to certify that the model line stated on this certificate is exempted from the requirements of Clause 6(1) of the Clean Air (Domestic Solid Fuel Heaters) Regulation 1997.

**Make** Kemlan  
**Model** Convectaire Fireplace Inserts Stage 1 & 2 Single and Double

..... **Date** 7/3/91  
**ALAN RITCHIE**  
**Manager Dangerous Goods**  
**Environment Protection Authority**



Kemlan Industries Pty Ltd

Head Office: 59 Pineapple Street (PO Box 259) Zillmere Queensland 4034

Telephone: (07) 3263 8488 Facsimile: (07) 3263 6452 [www.kemlan.com](http://www.kemlan.com)

Business hours: Monday to Thursday 7.30am-4.00pm • Friday 7.30am-2.00pm

## About Curing . . .

Your stove has been painted with the highest quality silicone stove paint and has special break-in procedures to cure it with heat and make it hard.

- Ventilate the house during the first three times the stove is used. The paint on the stove will give off smoke heavy with carbon dioxide and has an odour. Without adequate ventilation, concentrations of smoke could irritate, or be upsetting, so open doors and windows and use a fan if necessary. After these initial burns the paint will be cured and there should be no more smoke.
- Don't touch the surface. It will be soft and gummy during this paint curing phase. Once cured, it will not be soft again.
- Most stoves cure with 3 burns. The first two (2) should be 250°F for 20 minutes, or about half a normal fire. Let the stove cool down between burns. The last fire should be 500°F to 700°F for at least 45 minutes. The point being, cure slowly *without* a hot fire.
- Stoves with a cooler surface temperature and those that have been painted with another colour before, will take longer to cure.
- Curing can usually be observed by the effect of the paint turning flat as the heat radiates out from hotter parts of the stove.

So . . .

- **Ventilate well**
- **Do not touch during curing**
- **Cure with 3 fires**
- **Call your dealer for any questions**



Kemlan Industries Pty Ltd

Head Office: 59 Pineapple Street (PO Box 259) Zillmere Queensland 4034

Telephone: (07) 3263 8488 Facsimile: (07) 3263 6452 [www.kemlan.com](http://www.kemlan.com)

Business hours: Monday to Thursday 7.30am-4.00pm • Friday 7.30am-2.00pm

Email: [sales@kemlan.com.au](mailto:sales@kemlan.com.au)

6 March 2008

## WARRANTY

1. Kemlan wood heaters carry a warranty on the 6mm firebox for a period of ten (10) years.
2. This warranty also covers other components of the heater for a period of one (1) year. These components include the baffle plate, handle assembly, and fan.
3. Kemlan's warranty covers the wood heaters against defects in materials and manufacture.

### 4. This warranty does not cover –

- 4.1 Failure to comply with manufacturer's operation instructions.
- 4.2 Normal wear and tear or damage caused by incorrect installation.
- 4.3 Any form of rust and/or corrosion to the painted finish of the heater.
- 4.4 Damage to the glass in the door, if the damage is caused by impact or misuse.
- 4.5 The cost of collection and delivery of the wood heater and/or parts.
- 4.6 Damage caused by water ingress.
- 4.7 Cost of removal of defective heater or re-installation of replacement heater.

### 5. Claims –

- 5.1 (1) Kemlan will provide a full replacement of the heater in the first five years after installation.

(II) Replacement in the subsequent five years (i.e. sixth to tenth year after installation will be on the following basis.

Owner will pay twenty percent of purchase price if the claim is made in the sixth year and a further ten percent per year in every subsequent year to a maximum of fifty percent of the purchase price of the heater.

- 5.2 Replacement of heater subject to all conditions in section four of warranty.
- 5.3 Should any defects occur, contact the Kemlan distributor from whom you purchased the heater.
- 5.4 Under this warranty the defective parts will be repaired or replaced at Kemlan's option, free of charge.
6. The fireplace installation must comply with the relevant local statutes, ordinances, regulations and by-laws.

### PLEASE COMPLETE AND RETAIN THIS SECTION FOR YOUR RECORDS

Purchased from: .....

Address: .....

Date of Purchase: .....