

# ***Jetmaster***

***Fireplaces Australia***



Proudly  
Australian made.



---

With 50 years experience, Kemlan has developed a proven and strong distribution network to service our product and customers. We highly recommend customers purchase from these authorised dealers who provide rigorous and complete customer service. Purchase of a product online is strongly not recommended, as service, safety and customer satisfaction cannot be guaranteed.

Founded from humble beginnings in Brisbane in 1969, Kemlan Industries is today one of the world's leading specialist fireplace design and manufacturing companies. Proud to have remained family owned and Australian made, every Kemlan fireplace is crafted to exacting standards of quality, reliability, and innovative design supported by outstanding service.

---





TEMPO SERIES



TEMPO 3 PEDESTAL



TEMPO 3 LEGS



TEMPO STACK

FEATURES

- Environmentally friendly
- Preheated primary airwash system ensures a clean view of the fire
- Superb radiant heater
- Large glass ceramic viewing area
- High heat output
- Natural convection system
- Proudly made in Australia with a 10 year warranty
- Cook top surface



ULTRA CLEAN  
BURN  
1.5g/kg



LONG BURN  
TIMES



HIGH HEAT  
OUTPUT  
180-260m<sup>2</sup>

FEATURES

- Environmentally friendly
- Preheated primary airwash system ensures a clean view of the fire
- Superb radiant heater
- Large glass ceramic viewing area
- High heat output
- Natural convection system
- Proudly made in Australia with a 10 year warranty
- Convenient wood storage
- Cook top surface



ULTRA CLEAN  
BURN  
1.5g/kg



LONG BURN  
TIMES



HIGH HEAT  
OUTPUT  
180-260m<sup>2</sup>



# TEMPO GRAND



## FEATURES

- Environmentally friendly
- Preheated primary airwash system ensures a clean view of the fire
- Superb radiant heater
- Large glass ceramic viewing area
- High heat output
- Natural convection sides
- Cook top surface
- Proudly made in Australia with a 10 year warranty
- Optional fan



ULTRA CLEAN  
BURN  
1.1g/kg



LONG BURN  
TIMES



HIGH HEAT  
OUTPUT  
180-260m<sup>2</sup>

# C24 SERIES



C24



C24 BLACK

## FEATURES

- Firebrick-lined floor with ceramic sides and baffle plate and 6mm steel back plate for a robust and durable firebox
- 6-10mm cast iron top convection chamber, base and legs
- 6mm heavy duty steel firebox and fully welded 25mm thick firebrick lined floor
- Standard Colour - Metallic Black
- Proudly made in Australia with a 10 year warranty
- Optional 3 speed fan



ULTRA CLEAN  
BURN  
1.4g/kg



LONG BURN  
TIMES



HIGH HEAT  
OUTPUT  
180-260m<sup>2</sup>

# CUBE SINGLE OR DOUBLE SIDED

STANDARD BASE



## FEATURES

- Environmentally friendly
- Standard colour: Satin Black
- Folded 6mm steel firebox
- One slide control for ease of operation on Double sided model
- Single sided unit comes with fan
- Large glass ceramic viewing area
- Preheated primary airwash system ensures a clean view of the fire
- Superb Radiant and Convection heater
- Proudly made in Australia with a 10 year warranty
- Natural convection system



ULTRA CLEAN  
BURN  
1.3 g/kg



LONG BURN  
TIMES



HIGH HEAT  
OUTPUT  
180-260m<sup>2</sup>

# CUBE BASE OPTIONS



MERIDIAN WITH OPTIONAL  
STAINLESS STEEL TRIM



CUBE DOUBLE SIDED  
WITH SPHERE BASE



# SUPER NOVA FREESTANDER



## FEATURES

- Environmentally friendly
- Preheated primary airwash system ensures a clean view of the fire
- Fully shielded convection firebox
- Large glass ceramic viewing area
- High heat output
- Natural convection system
- Proudly made in Australia with a 10 year warranty
- Optional 3 speed fan



ULTRA CLEAN  
BURN  
1.3 g/kg



LONG BURN  
TIMES



HIGH HEAT  
OUTPUT  
180-260m²

# XL FREESTANDING



## FEATURES

- Firebrick-lined floor with ceramic sides and baffle plate and 8mm steel back plate for a robust and durable firebox
- The large clean ceramic glass-viewing area features a preheated primary airwash system which ensures a clean view of the fire
- Standard colour: Satin Black
- Proudly made in Australia with a 10 year warranty
- Standard 3 speed fan



ULTRA CLEAN  
BURN  
1.1g/kg



LONG BURN  
TIMES



HIGH HEAT  
OUTPUT  
240-360m²



# COUPE SERIES

## FREESTANDING, IN-BUILT OR WALL PENETRATION

The Kemlan Coupe Series is a double-sided unit that comes in freestanding, in-built or wall penetration models. The Kemlan Coupe burns safely, with the flame behind two large, strong ceramic glass viewing areas on either side. The advanced airwash system keeps the ceramic glass clean throughout the life of the fire and the full shielded firebox incorporates a two-way natural convection system. The Kemlan Coupe system beautifully distributes warmth evenly between two rooms and an optional two-speed fan is available to increase circulation with fan forced convection.



Coupe Inbuilt



## COUPE WALL PENETRATION & INBUILT FEATURES

- Unique double-sided fire
- Can be loaded from either side
- Pre- heated air-wash system ensures a clean view from both sides
- Suits single or double brick install
- 2 speed fan standard
- Satin Black standard
- 6mm laser cut mild steel firebox
- Unique Pyro- ceramic baffle
- Proudly made in Australia with a 10 year warranty



ULTRA CLEAN  
BURN  
1.2g/kg



LONG BURN  
TIMES



HIGH HEAT  
OUTPUT  
180-220m2 hi



# CELESTIAL FREESTANDER



## FEATURES

- Ultra Low 0.6 gram particulate
- Up to 10 hours burn time
- Folded 6mm steel firebox, firebrick lined with n14 ceramic baffle creating a robust and durable fire box
- The large clean ceramic glass-viewing area features a preheated primary airwash system which ensures a clean view of the fire
- Proudly made in Australia with a 10 year warranty



ULTRA CLEAN  
BURN  
0.6 g/kg



LONG BURN  
TIMES



HIGH HEAT  
OUTPUT  
220 - 360m<sup>2</sup>

# CELESTIAL 900 INBUILT



## FEATURES

- Ultra Low 0.6 gram particulate
- Up to 10 hours burn time
- Zero Clearance (into metal framework) box comes as standard
- Convenient and highly efficient Heat Zone Technology
- Firebrick-lined floor with baffle plate and 6mm steel back plate for a robust and durable firebox
- The large clean ceramic glass-viewing area features a preheated primary airwash system which ensures a clean view of the fire
- Proudly made in Australia with a 10 year warranty



ULTRA CLEAN  
BURN  
0.6 g/kg



LONG BURN  
TIMES



HIGH HEAT  
OUTPUT  
220 - 360m<sup>2</sup>



# SUPER NOVA INSERT



## FEATURES

- Firebrick-lined floor with baffle plate and 6mm steel back plate for a robust and durable firebox
- The large clean ceramic glass-viewing area features a preheated primary airwash system which ensures a clean view of the fire
- Proudly made in Australia with a 10 year warranty
- Standard colour: Satin Black
- Standard 2 speed fan
- Adjustable depth firebox, perfect for existing brick fireplace conversions.



ULTRA CLEAN  
BURN  
1.3g/kg



LONG BURN  
TIMES



HIGH HEAT  
OUTPUT  
180-240m<sup>2</sup>

Please refer to specification page for unit dimensions.

# CELESTIAL 900 FAN INSERT



## FEATURES

- Low 1.4g/kg emission rate
- Up to 10 hours burn time
- optional zero clearance kit available so it can be installed into timber frame work
- Convenient and highly efficient Heat Zone Technology
- Firebrick-lined floor with baffle plate and 6mm steel back plate for a robust and durable firebox
- The large clean ceramic glass-viewing area features a preheated primary airwash system which ensures a clean view of the fire
- Proudly made in Australia with a 10 year warranty
- Standard 2 speed fan to maximize your convection air output



ULTRA CLEAN  
BURN  
1.4 g/kg



LONG BURN  
TIMES



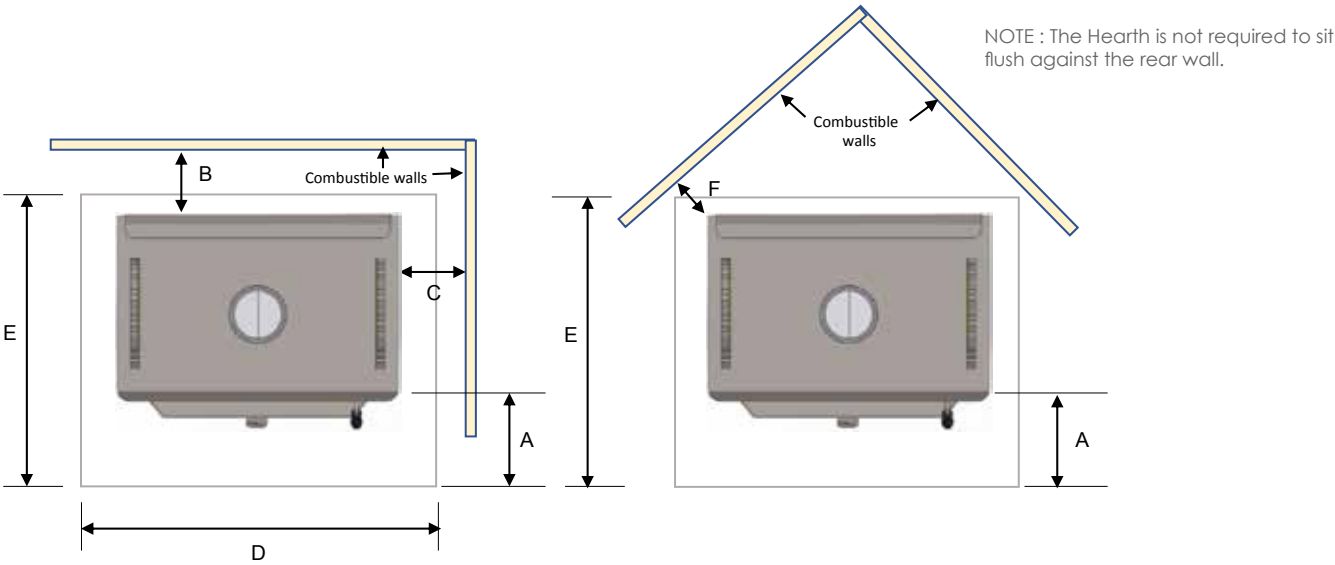
HIGH HEAT  
OUTPUT  
220 - 360m<sup>2</sup>



# SPECIFICATIONS

## FREESTANDING CLEARANCES

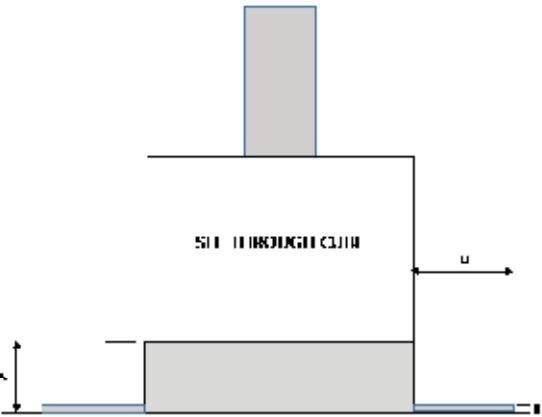
MINIMUM CLEARANCES TO HEAT SENSITIVE MATERIALS AND MINIMUM FLOOR PROTECTOR REQUIREMENTS



MODEL	A (mm)	B (mm)	C (mm)	D (mm)	E (mm)	F (mm)
TEMPO GRAND	560	250	450	895	1135	200
TEMPO 3	300	225	250	800	755	125
TEMPO STACK	300	225	250	800	755	125
C24 / C24 CLASSIC	350	150	450	850	1025	225
XL	500	70	490	650	1375	50
CELESTIAL	725	70	350	1180	1115	45
SUPER NOVA F/S	360	115	325	895	793	125
CUBE	300	90	300	875	1004	125

One 900mm length of heatshield must be fitted to the flue to achieve clearances to heat sensitive materials (measurements A B C D E F). For all freestanding models a floor protector is required where the floor is heat sensitive. Thickness to be a minimum of 9mm heat resistant material. With regard to the Coupe Insert and Wall Penetration units; they both require 9mm of non combustible sheet below the unit. All dimensions shown are approximate. Check all dimensions accurately before installation. Before installation refer to the installation instructions. In line with our policy of continuous improvement, we reserve the right to alter specifications without notice.

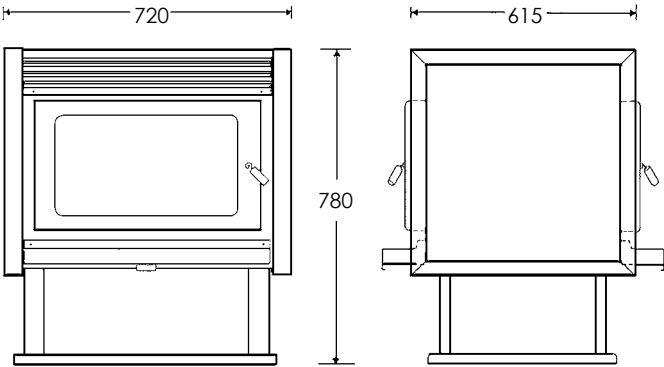
### Cube + See Through Cube Hearth Clearances



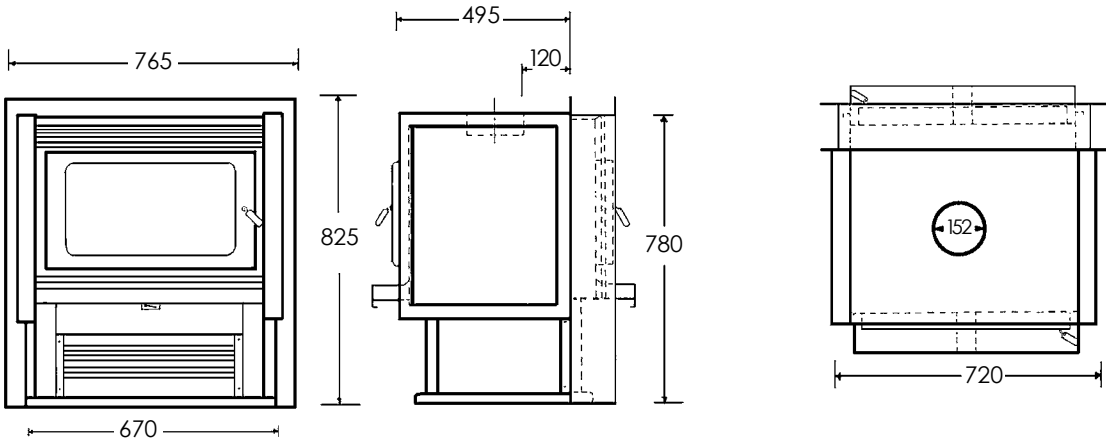
A	UNIT HEIGHT ABOVE FLOOR	300 MIN
B	HEARTH DIMENSION FORWARD OF UNIT	300

### Coupe Freestanding

Clearances  
Side Wall - 350mm

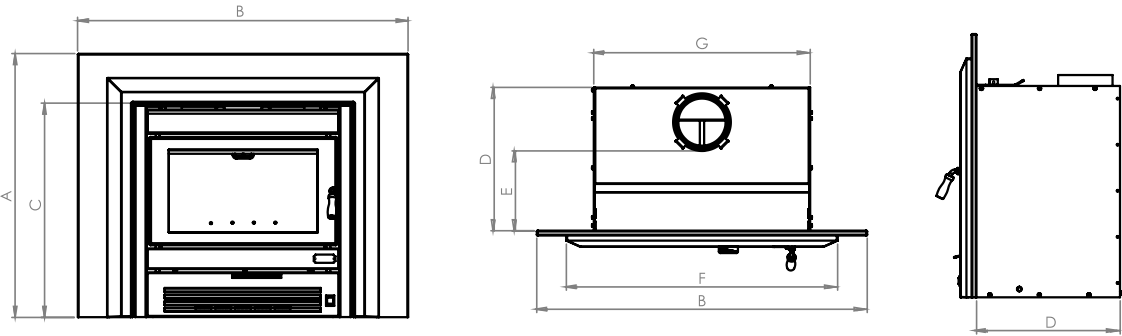


## COUPE WALL PENETRATION



## IN-BUILT CLEARANCES

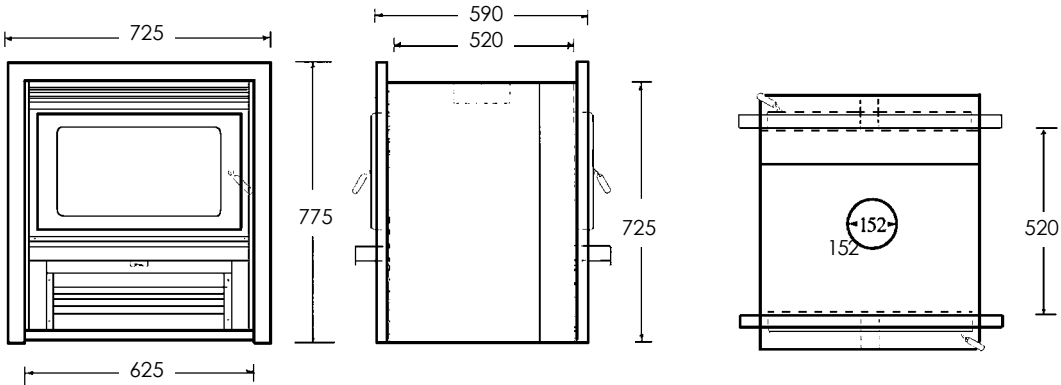
Super Nova



MODEL	A (mm)	B (mm)	C (mm)	D# (std./c.iron)	E# (std./c.iron)	F (mm)	G (mm)	kW**	% Eff.	Fuel Consumption* (kg/hr)	Weight (kg)
SUPER NOVA	800	1000	640	420/460	230/280	660	660	14.5	63	2.4kg/hr	128

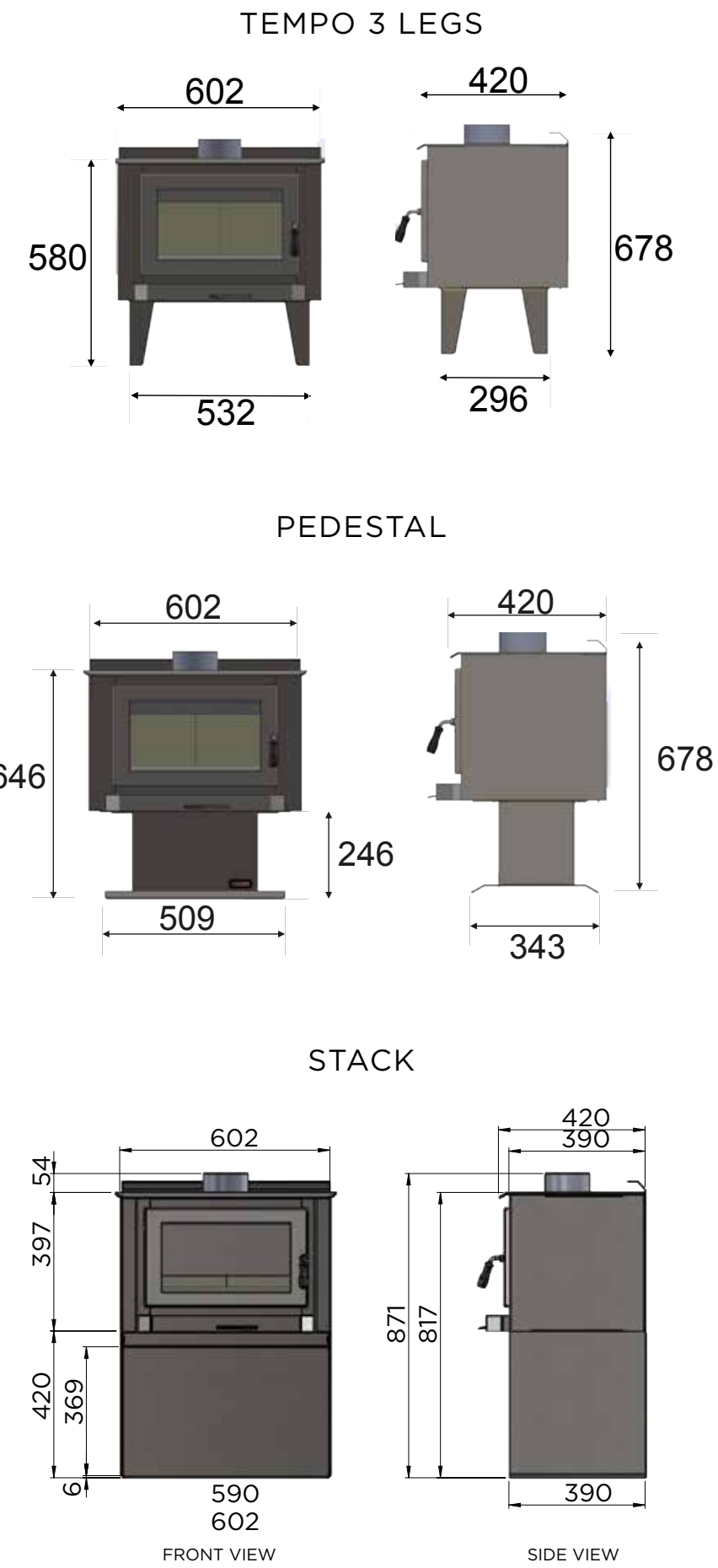
#Reference to cast iron fascia (D & E) only relates to Super Nova. Sizes vary due to design and style. A fan must be installed if a timber mantle is used. Flue Size - 150mm.

## COUPE IN-BUILT

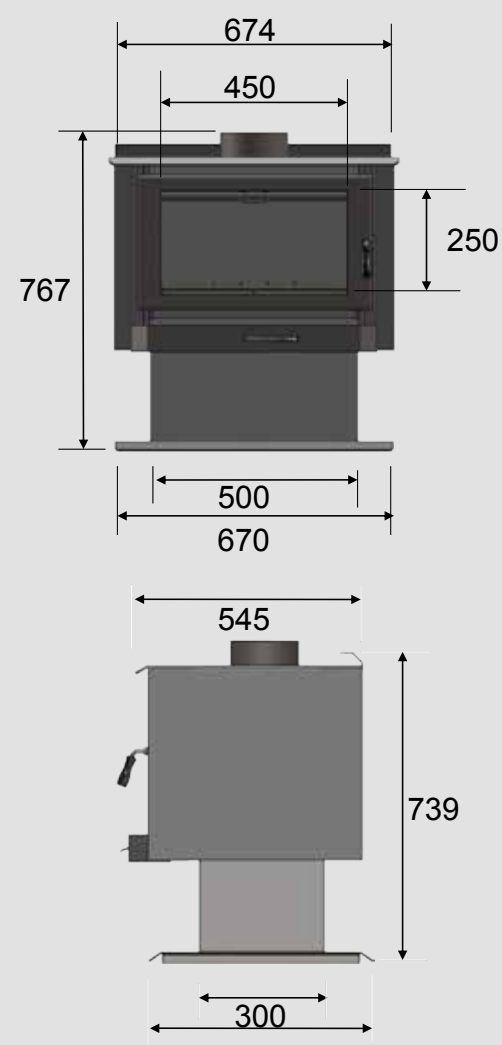




TEMPO SERIES

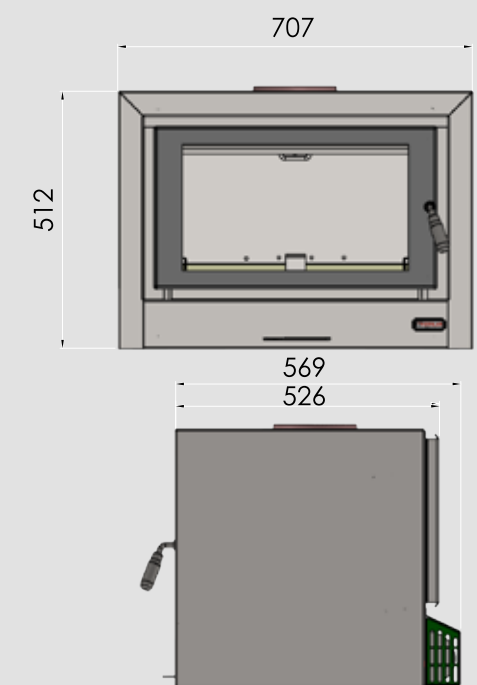


TEMPO GRAND

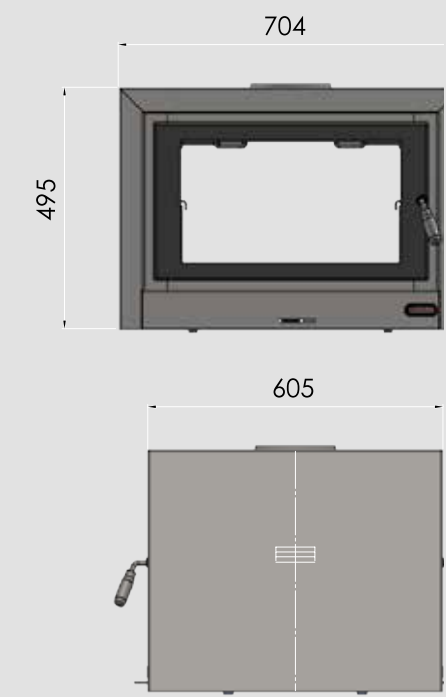


CUBE

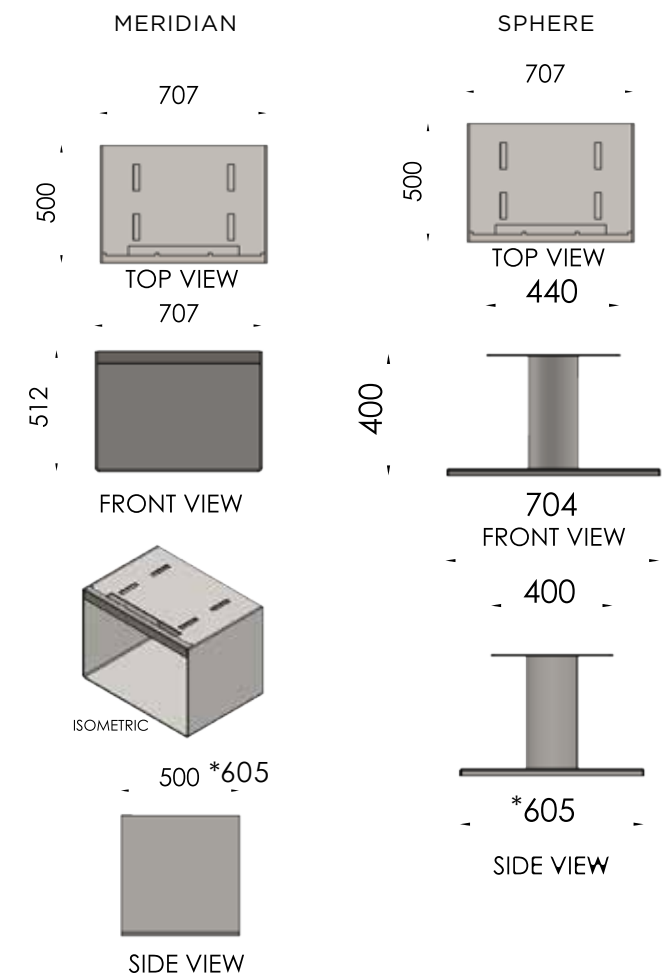
SINGLE SIDED



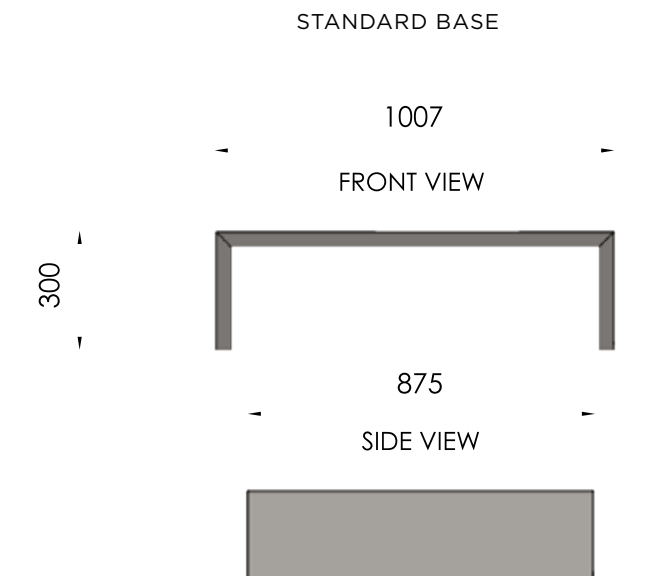
DOUBLE SIDED



CUBE BASE OPTIONS

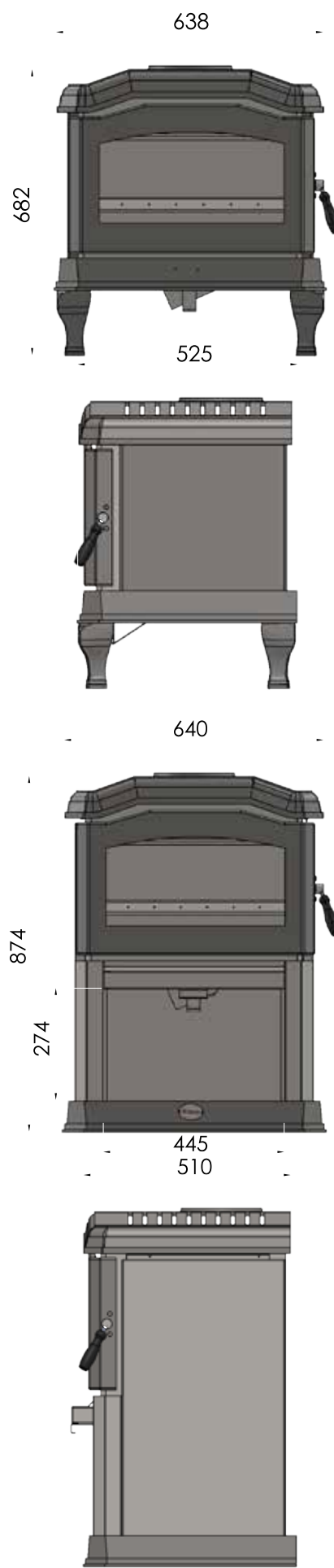


\*605 double sided base depth  
custom sizes available

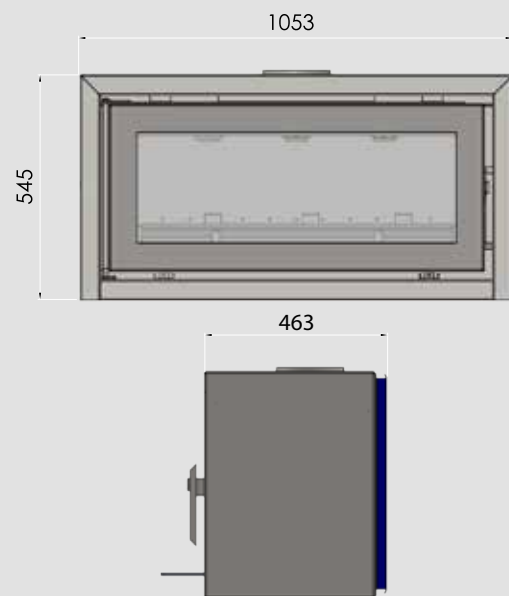




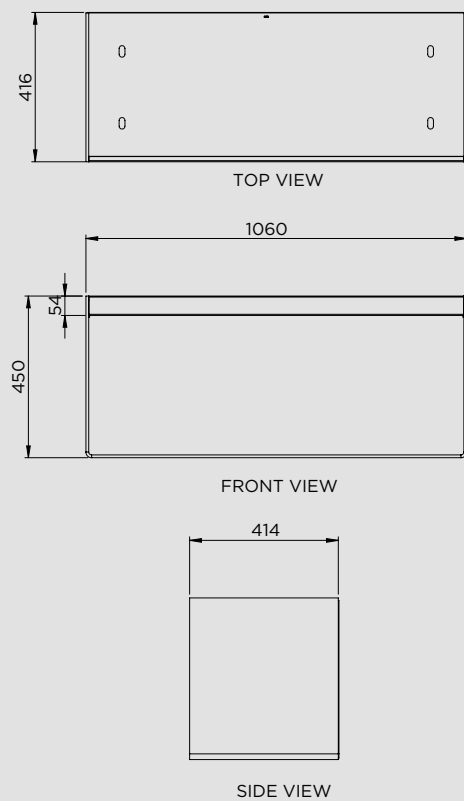
C24 SERIES



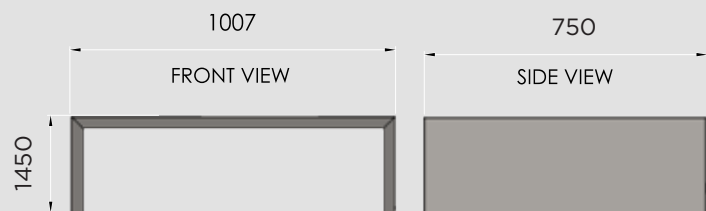
CELESTIAL  
FREESTANDER



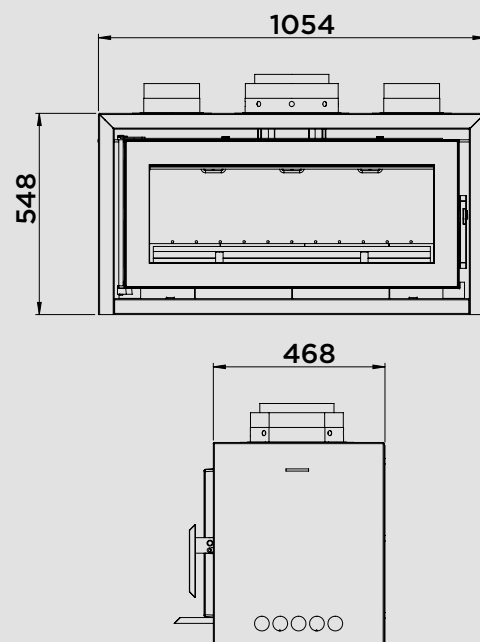
MERIDIAN  
BASE OPTION



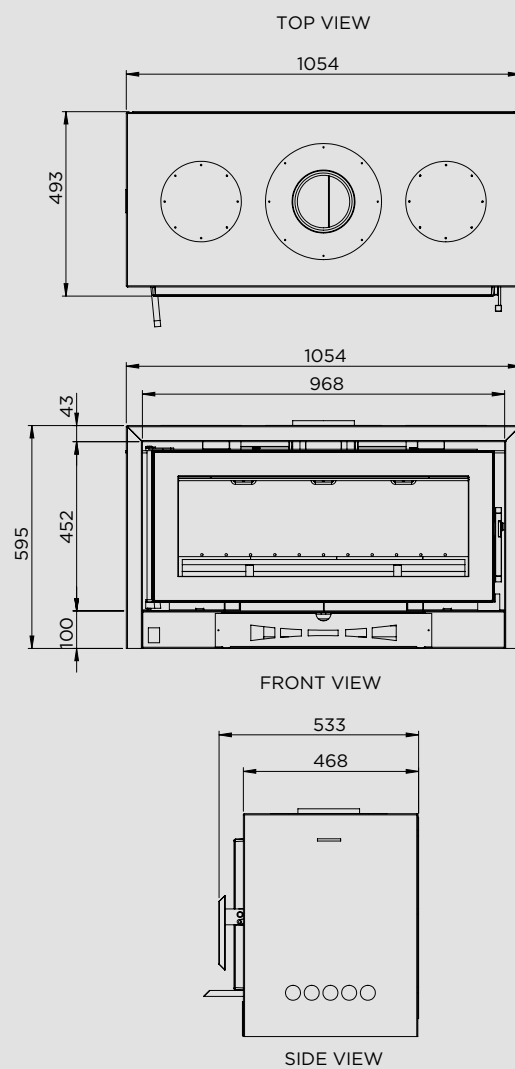
STANDARD BASE FOR CELESTIAL 900



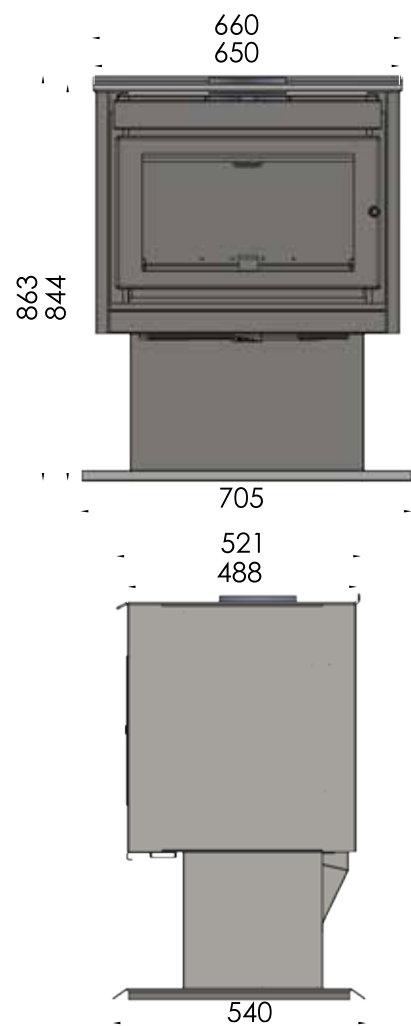
CELESTIAL  
900 INSERT



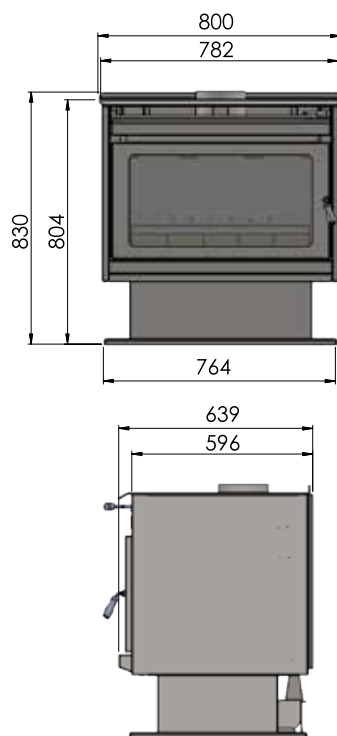
CELESTIAL  
900 FAN FORCED



SUPER NOVA  
FREE STANDER



XL  
FREESTANDING





This image shows a single sheet of white paper with horizontal ruling lines, resembling notebook paper. The paper is centered and takes up most of the frame. It has ten evenly spaced horizontal lines. The paper is surrounded by a thick black border, which is itself set against a larger orange background. In the top-left corner of the orange area, the word "NOTES" is written in bold, white, uppercase letters.



For the entire Jetmaster range, visit your nearest showroom  
jetmaster.com.au | 1300 538 627

VIC - [www.jetmaster.com.au](http://www.jetmaster.com.au)